

Fig. 11—Rear Spring (Carline C)

### Installation

Inspect rear spring front pivot bolt bushing and if necessary, replace bushing; see "Pivot Bushing Replacement" procedure.

Installation procedure for Carline C differs as follows:

- Assemble front spring hanger to front spring eye and install pivot bolt. **Do not tighten.**
- Raise spring and start spring hanger bolts in mounting bracket holes. Install nuts, tighten to 30 foot pounds.
- Assemble shackle and bushings to spring rear eye and rear spring hanger. (Do not lubricate rubber bushings.) Start shackle bolt nuts but **do not tighten.**
- Raise spring into position, install spring stretcher (Tool C-4211) and apply tension to facilitate installation of hanger to frame bolts. Tighten all hang-

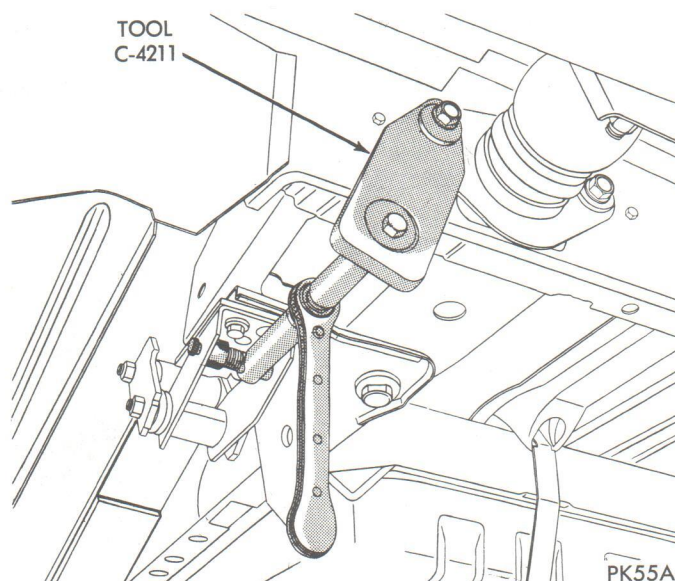


Fig. 12—Spring Stretcher Tool in Position for Removing Rear Spring (Carline C)

er bolts to 30 foot pounds. Remove spring stretcher continue with step 5.

- Assemble shackle and bushings in rear of spring and rear spring hanger. (**Do not lubricate rubber bushings.**) Start shackle bolt nut. **Do not tighten.**
- Assemble front spring hanger to front spring eye and install pivot bolt and nut. **Do not tighten.**
- Position rear spring hanger to body bracket and install bolts and tighten bolts to 30 foot-pounds.
- Raise the spring and start the spring hanger bolts in mounting bracket holes (light leverage such as mechanics shoulder under spring might be necessary to position spring hanger studs in mounting bracket holes). Install nuts and tighten to 30 foot-pounds.
- Lower axle assembly into correct position with axle centered over spring center bolt.
- Position the spring clamp and upper isolator over center bolt followed by bottom isolator and plate on vehicles so equipped (Figs. 13 and 14). Install "U" bolts and nuts. Tighten to 45 foot-pounds.
- Install shock absorber and install nut. Connect sway bar link if applicable.
- Lower vehicle to floor and with full weight of vehicle on the wheels, tighten pivot bolts and/or nuts to 125 foot-pounds. Tighten shackle nuts 40 foot-pounds on all models. Tighten shock absorber nut 35 foot-pounds. (35 foot-pounds R, W, X, S, H, N, F and G models).
- It is recommended that after a rear spring has

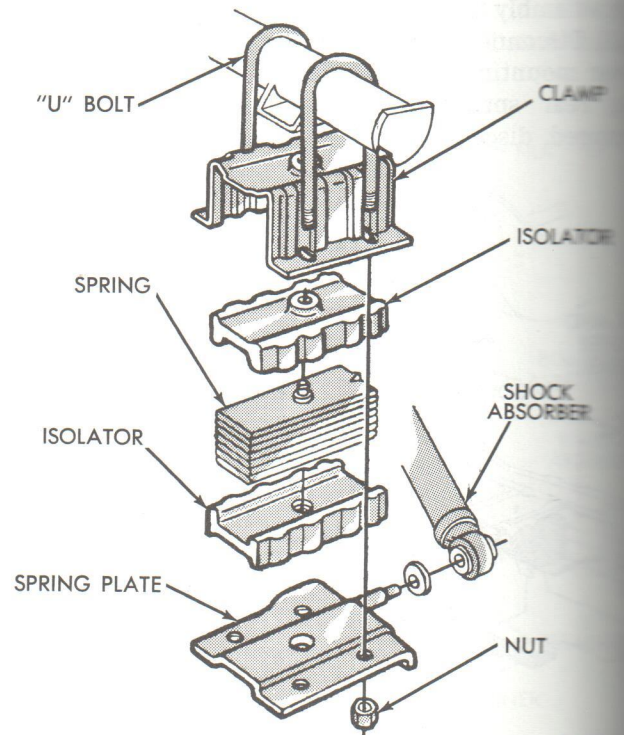


Fig. 13—Rear Spring Isolator (Carline C)