

INSPECTION

Upon completion of an area, inspect for blisters due to trapped air or water. All blisters should be

worked out with the squeegee, or punctured with a sharp needle or pin and then pressurized until the film adheres to the body surface. All edges must be adhered to the body surface.

BODY AND FRAME ALIGNMENT INDEX

| | Page | | Page |
|----------------------------------------------|------|-------------------------|------|
| FRAME | | Gauge Alignment Chart | 125 |
| Body Alignment (Belvedere—Satellite—Valiant) | 125 | Forestructure Alignment | 122 |
| Fury | 122 | Replacement | 122 |

SERVICE PROCEDURES

FRAME ALIGNMENT—Fury Models

The various frame dimensions (Figs. 1, 2 and 3) may be used as a guide in measuring frame alignment. Diagonal measurements should be taken when straightening frame.

Measure distance between points connected by line "A", (Fig. 3). This distance should agree within 1/4 inch with distance between points connected by line "B".

The diagonals (Fig. 3) represent only one of the few that may be checked. **Care should be taken to make sure that any two diagonals compared represent exactly corresponding points on each side of the frame.**

Minor frame alignment can usually be corrected by straightening bent frame parts. A badly distorted frame can in most cases be replaced more economically than by attempting repairs.

FRAME REPLACEMENT

The forestructure (stub frame) is attached to the

body at ten locations—four at brackets extending down from the cowl panel and six under the front passenger compartment where the frame is joined to the underbody crossmember.

The body to frame alignment measurement should be performed whenever the stub frame has been removed, replaced, repaired or the front end sheet metal cannot be properly aligned.

Removal

(1) Disconnect battery, drain cooling system and remove heater hoses from engine.

(2) On air conditioned units, use safety goggles when discharging system and remove hoses from air compressor.

(3) Disconnect electrical leads at junction block and all connections between engine and dash panel.

(4) Remove bolts attaching hood torsion bar brackets to cowl and wheelhouse (Fig. 4).

(5) Remove brake line at master cylinder and power brake hose from brake unit.

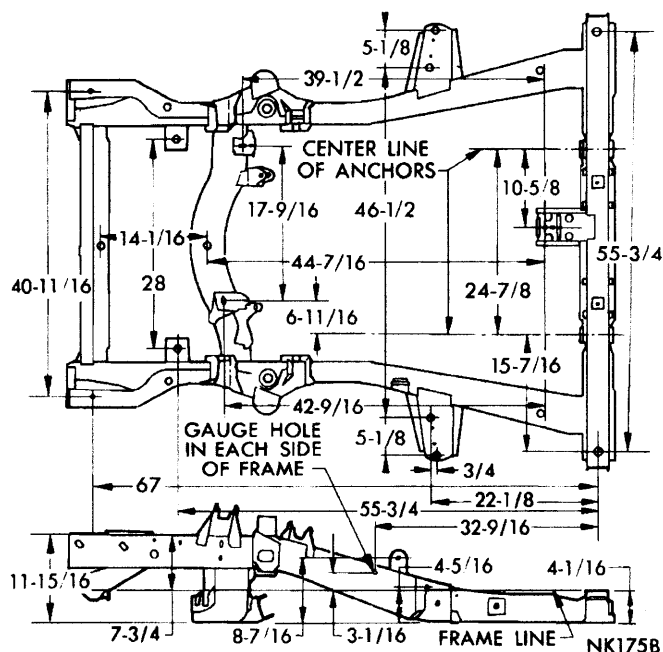


Fig. 1—Frame Dimensions—Fury 6-Cylinder

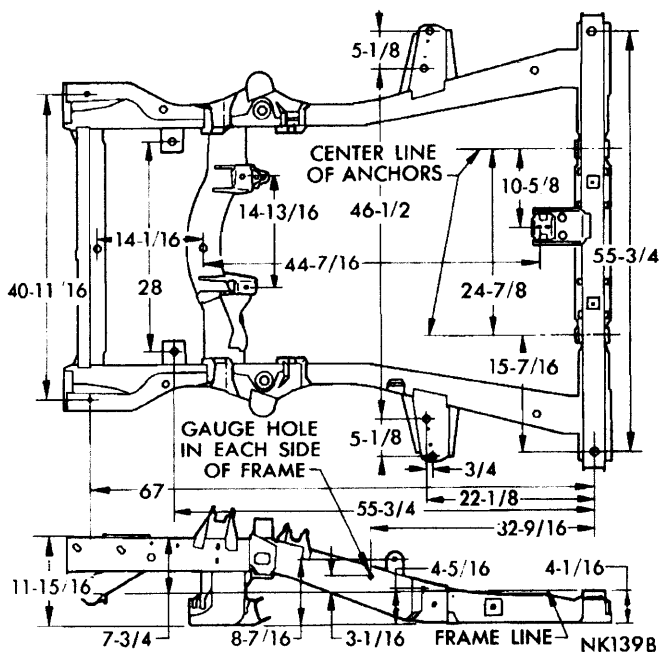


Fig. 2—Frame Dimensions—Fury 8-Cylinder